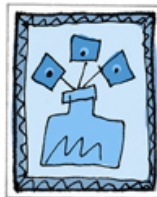


THE MUSEUM



CUT
FOLD
GLUE

RETROPAINTING

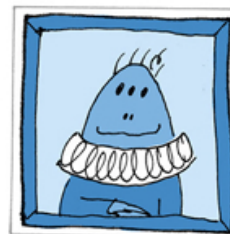


(D)
(E)



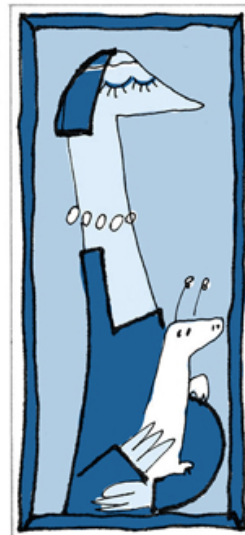
BLUE MONA

(C)

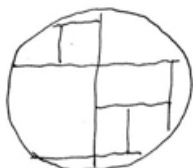


LOUIS LXXV

(G)



THE LADY WITH THE ALIEN



PAG.1

ARTWORK THAT'S BETTER LEFT UNOPENED.



DON'T FORGET TO HANG THE PAINTINGS STRAIGHT!



OF COLOROPOLI

IN THE MUSEUM OF COLOROPOLI, YOU'LL FIND THE MOST IMPORTANT WORKS ON THE PLANET. ONCE UPON A TIME ALL PAINTINGS WERE RED BECAUSE NO ONE EVER THOUGHT ABOUT USING OTHER COLORS.

BUT ONE DAY A PAINTER DREW A BLUEBERRY BASKET IN FRONT OF THE BLUE OCEAN: IT WAS SO HIGHLY ACCLAIMED THAT FROM THEN ON THEY ONLY PAINTED IN BLUE.

A PROJECT BY
UNITED COLORS OF BENETTON.

IN COLLABORATION WITH

MUBA
MUSEO DEI BAMBINI MILANO

BY
ISADORA BUCCIARELLI



SUPERFAST DOG FROM FUTUROPOLIS

(E)

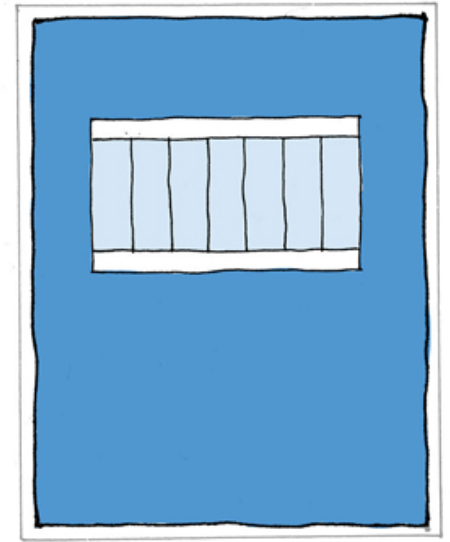
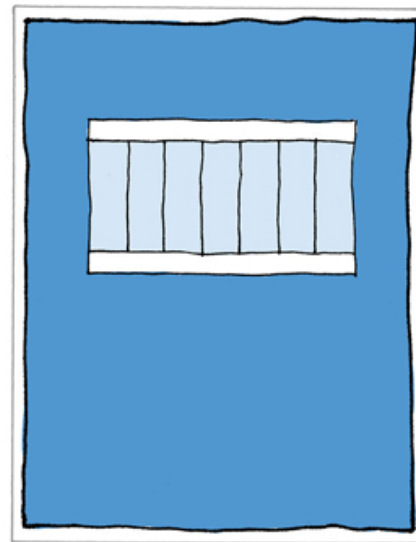
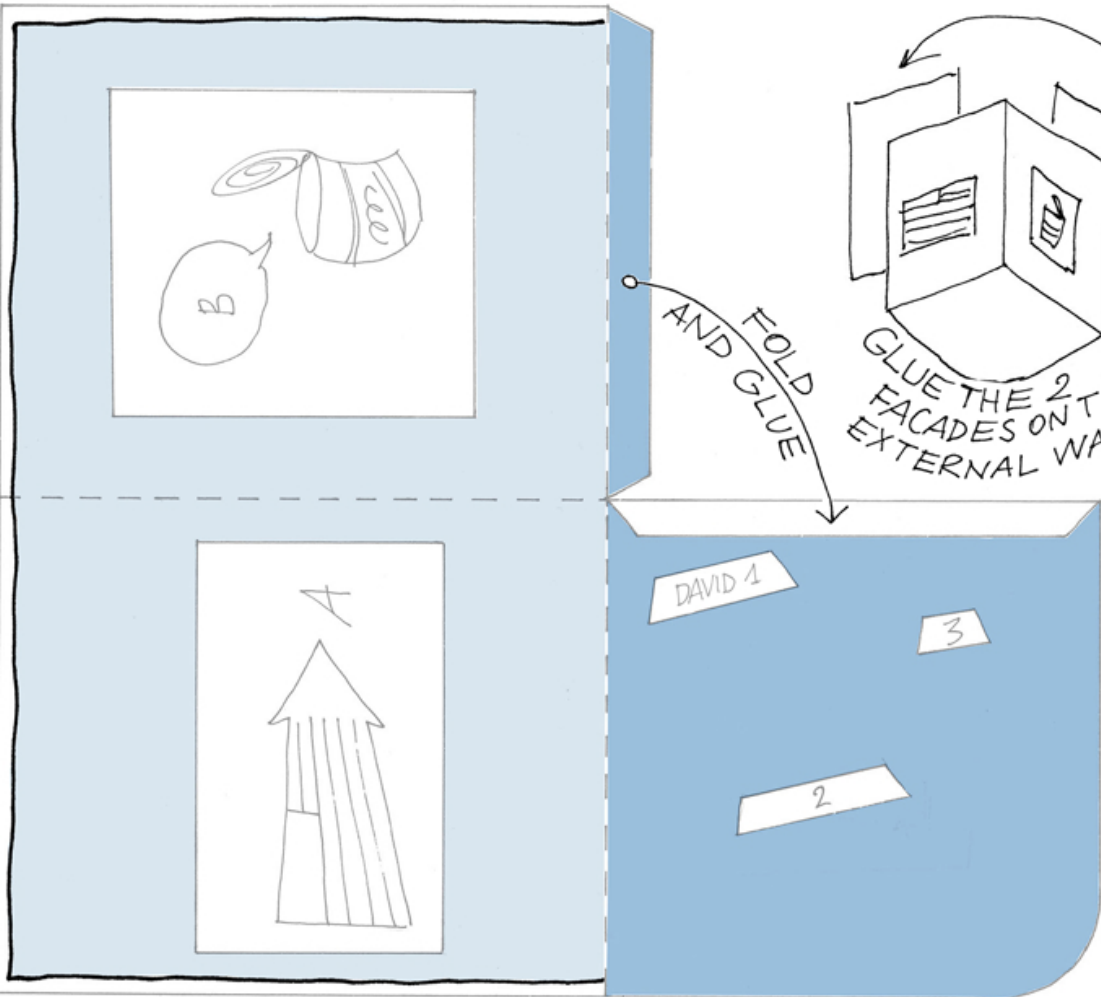
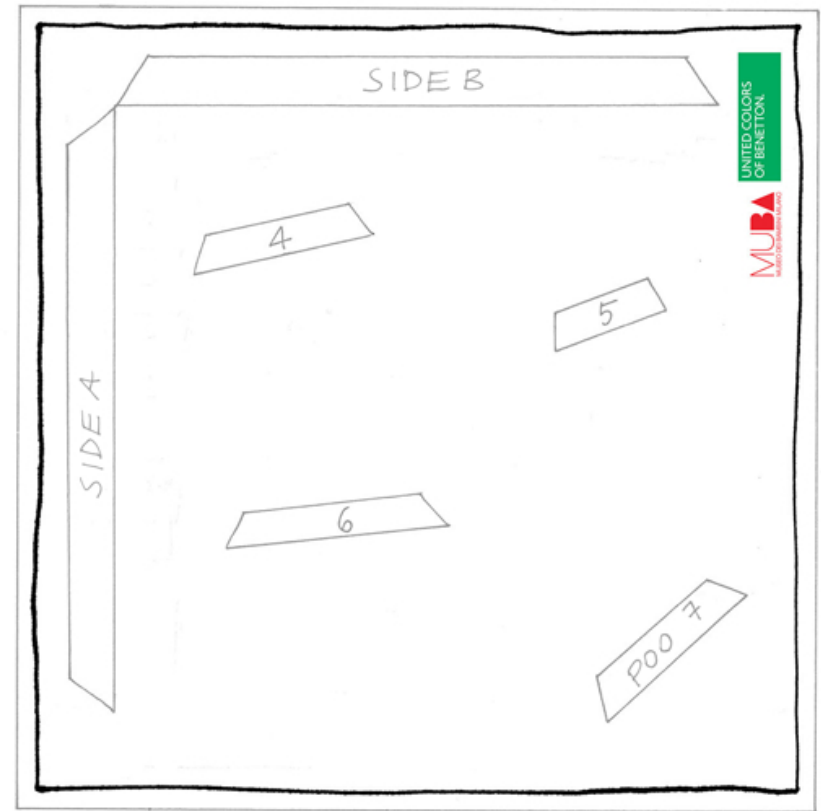


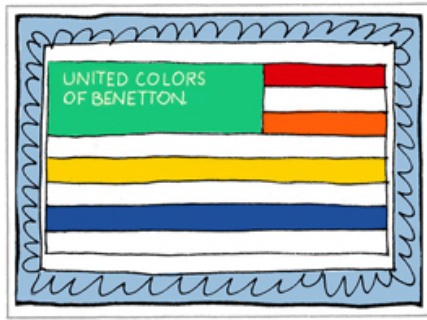
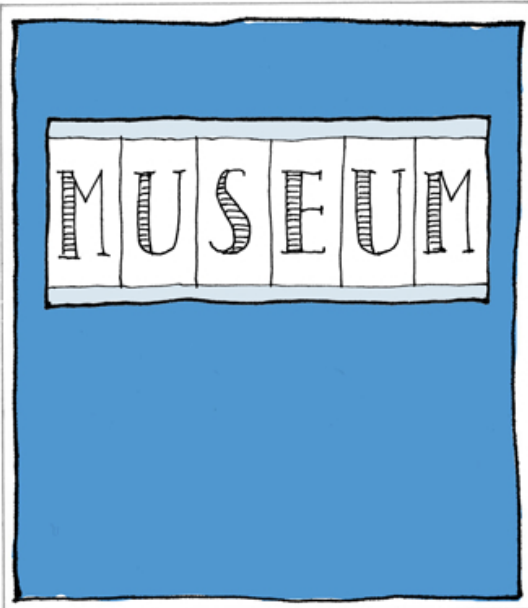
(B)



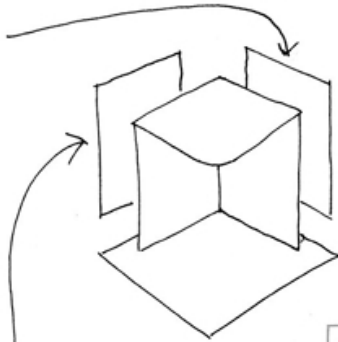
ARTIST'S SAUCE

PAG.2

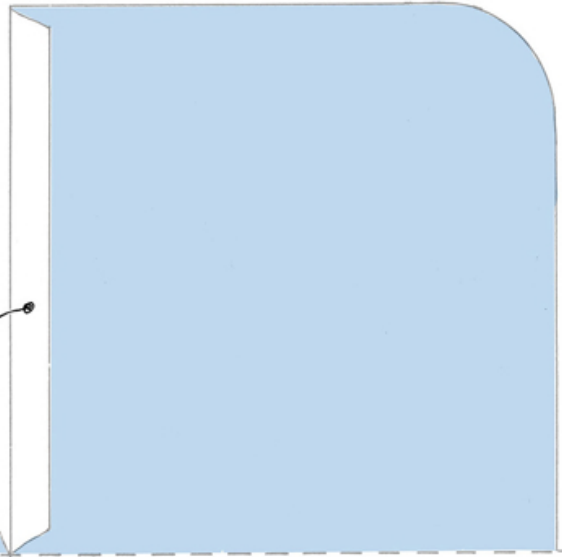




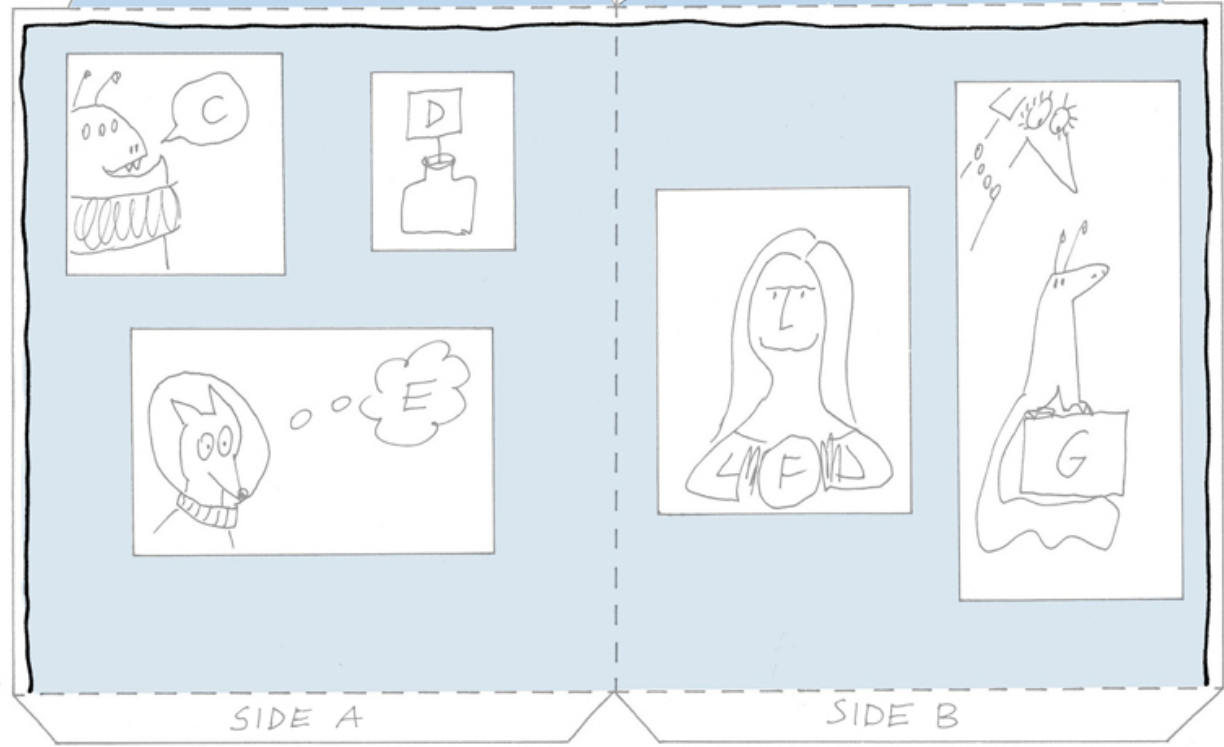
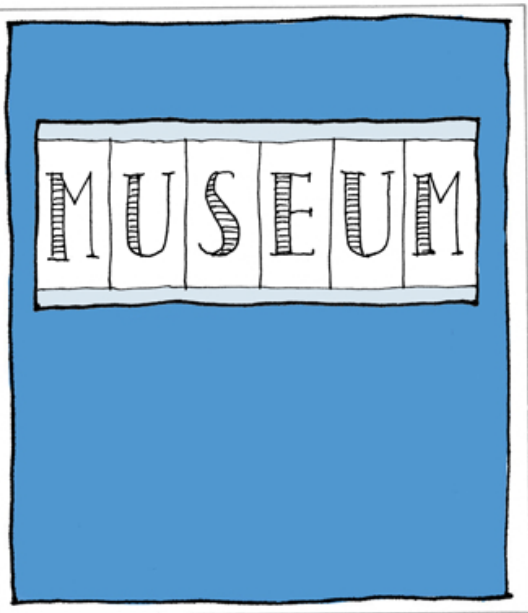
(A)
GLUE THE 2 EXTERNAL FACADES BEHIND THESE WALLS



FOLDA AND GLUE



THESE ARE THE 2 EXTERNAL FACADES



SIDE A

SIDE B